

Basic Outdoor Cooling 3/8 in. Misting System

Instructions

IMPORTANT: READ ALL INSTRUCTIONS AND CHECK KIT CONTENTS BEFORE BEGINNING ASSEMBLY.

Basic Outdoor Cooling 3/8 in. Misting System Contents List

Check the contents in the parts bag. If items are missing, please return unopened to the place of purchase, or call Orbit® Customer Service at (800) 488-6156.

Part	Qty	Description
	1	Pre-Assembled 3/8 in. UV Treated Flexible Mist Line - Includes 6 fully rotatable fittings inserted in tubing at 24 in. increments, 10 ft. of feed line, a hose adapter and a threaded end cap
	5	Brass and Stainless Steel Nozzles
	10	Hanging Clamps w/ Nails
	1	T Filter
	1	Auto Drain Valve

Useful Tips for Mist System Layout

For the most effective cooling:

1. Mist line is placed around the perimeter of the area to be cooled. This forms a "mist curtain," a cooling barrier between the protected area and the outside heat.
2. Place mist nozzles 24 in. apart for mist lines mounted 8 ft. to 10 ft. above the ground.

Optional Mist System Accessories

Extended Feed Line

Additional length can be added to the feed line with Professional Outdoor Cooling 3/8 in. Misting System Tubing (Item #92228) and a Professional Outdoor Cooling 3/8 in. Misting System Coupling (Item #10127).

Auto Drain Valve

This is used to automatically drain off excess water from the line when water is turned off. The drain valve should be threaded into the last fitting of the mist line to reduce calcium build-up in the nozzles. If there are multiple elevation changes, more than one drain valve may be needed. These should be installed at the lowest points in your system.

Nozzle Extensions

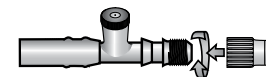
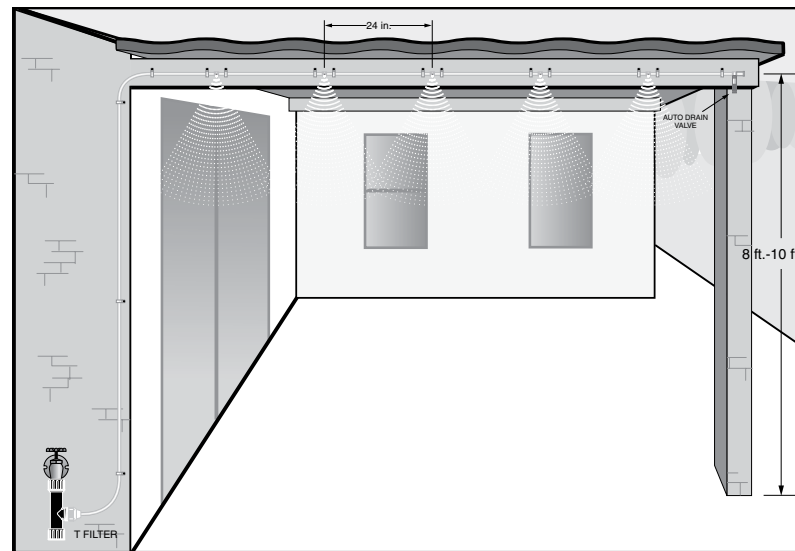
4 in. Nozzle Extensions, (Item #10056H) can be utilized to extend nozzle away from fitting and allow easy, versatile direction of mist.

Filters

(1) T Filter attaches directly to 3/4 in. hose faucet and protects nozzles from clogging by filtering solid sediments before they pass through to the mist line.

(2) A Calcium Inhibitor Filter (Item # 10109) filters solid sediments and reduces mineral deposit build up. (See Accessory List)

Use and Placement of Mist System Components



Patented threaded extension end makes customizing and extending your system a breeze!

Before Mounting Your Mist System

Flush Mist Line

Before screwing nozzles into fittings, connect Hose Adapter to garden hose or faucet. Turn on the water for a few minutes to flush out any dirt or debris from within the mist line. Turn off the water and place nozzles in fittings (hand tighten only).

Pressure Test Mist System

With mist line still attached to water source, turn water on to test line pressure and fittings for proper installation. Water will shoot from the drain valve when the water is turned on. Do not be alarmed. The valve will shut off when the line is pressurized. Inspect each fitting. Should any fitting leak, see the section on Troubleshooting for instructions.

Mounting Your Mist System

Make sure your Mist System has been flushed and pressure tested prior to mounting mist line.

Step 1 It is recommended that the system be mounted on the bottom of the supporting structure. Begin by placing one of the 3/8 in. hanging clamps over the mist line 3 in. from the first nozzle. The first fitting in your Mist System should begin 2 ft. from the house on a patio cover. Hammer the clamp into the BOTTOM of the support beam or fascia board.

Step 2 Continue placing a hanging clamp 3 in. on each side of each fitting and hammering in place. Pull tubing slightly while applying each clamp to avoid sagging in mist line.

Step 3 Connect the T Filter to the water source, then connect the feedline to the T Filter and turn on the water to operate mist system.

Maintenance

The following recommendations will assist you in maintaining your mist nozzles and preventing unnecessary clogging.

Draining Water from Mist Line

Whenever the mist system is not in use the residual water should be drained to minimize nozzle clogging. If your system has had an Auto Drain Valve installed correctly no additional steps are required after turning off the water. If an Auto Drain Valve has not been installed, detach system at the water source and allow the water to drain completely.

Orbit®|Arizona Mist® Nozzle Cleaner (Model #10103)

Periodically clean the nozzles in system. See bottle for instructions.

Calcium Inhibitor Filter (Model #10109)

Orbit®|Arizona Mist® Filter can also be used to prevent any solid sediments from passing from the water source to the nozzles and helps reduce calcium build up on nozzles.

Flushing System

Always remove nozzles at the end of the summer season. Before reinstalling your nozzles flush the system for 5 minutes. To keep the mist line free from debris in the off-season install Orbit®|Arizona Mist® Nozzle Plugs (Item #10107) in place of nozzle. You should also flush the system if it has been idle for longer than a month.

Troubleshooting

Leak in Tubing

If a leak occurs in the actual tubing itself (not the point where the tubing meets the fitting), the tubing must be replaced where the leak has occurred.


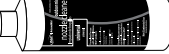


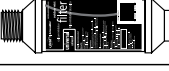


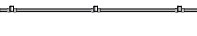
Leak in Nozzle

Make sure the nozzle is sufficiently tightened into place. **HAND TIGHTEN ONLY - DO NOT USE TOOLS.** Check to make sure the nozzle O-ring is in place. Also, nozzle may be clogged, which can give the appearance of leaking or dripping. Clean with nozzle cleaner.

System Expansion, Customizing & Maintenance Accessories

The Basic Outdoor Cooling 3/8 in. Misting System can be easily expanded up to 25 nozzles/50 ft. of mist line by using the Basic Outdoor Cooling 3/8 in. Misting System Extension (Item #30068). Simply unscrew end cap from last fitting and attach the extension kit. Following are the Orbit®|Arizona Mist® accessories available to expand and/or maintain your Basic Outdoor Cooling 3/8 in. Misting System for many years of cool mist enjoyment.

System Expansion, Customizing & Maintenance Accessories (Continued)

Picture	Part #	Product Description
	10056H	4 in. Nozzle Extension—Use to extend nozzle away from Split Section and allows for easy versatile direction of mist
	10103	Nozzle Cleaner - 8 oz. bottle. Used to dissolve mineral deposits on nozzles
	10106	Nozzle 5-Pack - Brass and stainless steel nozzles available as replacements
	10107	Plug 5 Pack— Use to close unneeded misting outlets
	10109	Calcium Inhibitor Filter—Attaches directly to 3/4 in. hose faucet. Protects nozzles from clogging due to sediment or calcium build up
	10115	Auto Drain Valve
	20001	Stucco Installation Kit
	30068	10 ft. Extension Kit—Attaches to threaded fitting to expand system by 5 nozzles, creating 10 ft. of additional mist

Warranty and Statement

Orbit® Irrigation Products, Inc. warrants to its customers that its Orbit® Arizona Mist® products will be free from defects in materials and workmanship for a period of four years from the date of purchase. We will replace, free of charge, the defective part or parts found to be defective under normal use and service for a period of up to four years after purchase (proof of purchase required). We reserve the right to inspect the defective part prior to replacement. Orbit® Irrigation Products, Inc. will not be responsible for consequential or incidental cost or damage caused by the product failure. Orbit® liability under this warranty is limited solely to the replacement or repair of defective parts.

To exercise your warranty, return the unit to your dealer with a copy of the sales receipt.

Questions please call: 1-800-488-6156 or 1-801-299-5555
www.orbitonline.com



Register your product online at www.orbitonline.com

Orbit® Irrigation Products Inc.
845 N. Overland Rd.
North Salt Lake, Utah 84054 USA
<http://www.orbitonline.com>
800-488-6156
801-299-5555

P/N 30060-24 Rev C



F 801 295 9820
F 801 951 5815
www.fluid-studio.net
1065 South 500 West
Bountiful, Utah 84010

PROOF NO: 2
DATE: 10.28.09
DES: MZ SPCK: MZ
JOB NO: N/A
CLIENT: Orbit
SKU: 30060
UPC: N/A
FILE NAME: 30060-24 rC.indd
SOFTWARE: InDesign CS3

DIMENSIONS:
FLAT: W: 14" **H:** 8.5"
FINISHED: W: 14" **D:** 0" **H:** 8.5"

COLORS

<input type="checkbox"/> Registration	<input type="checkbox"/> color non printing	<input type="checkbox"/> color non printing	
<input type="checkbox"/> BLACK	<input type="checkbox"/> PMS ????	<input type="checkbox"/> PMS ????	<input type="checkbox"/> PMS ????

ADDITIONAL INSTRUCTIONS:

- Font sizes cannot be smaller than 7 pt.
-
-

Printers are responsible for meeting print production requirements. Any changes must be approved by the client and Fluid Studio.

PRINTED PIECE MUST MEET DESIGNATED SPECIFICATIONS ON THIS FORM.

© 2007 Fluid Studio. This work is the property of Fluid Studio, and cannot be used, reproduced or distributed in any way without their express permission.